

MONTHLY MEMBERSHIP PROGRESS REPORT

District 31 I

Results as of: 3/31/2026

GMT:

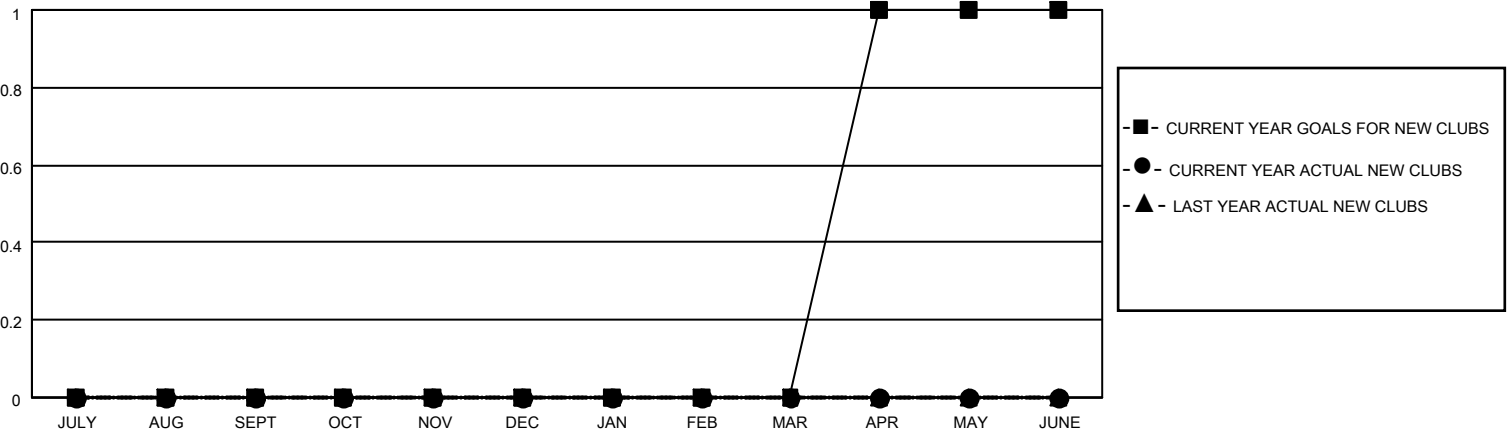
LOCATION NORTH CAROLINA

GMT CA

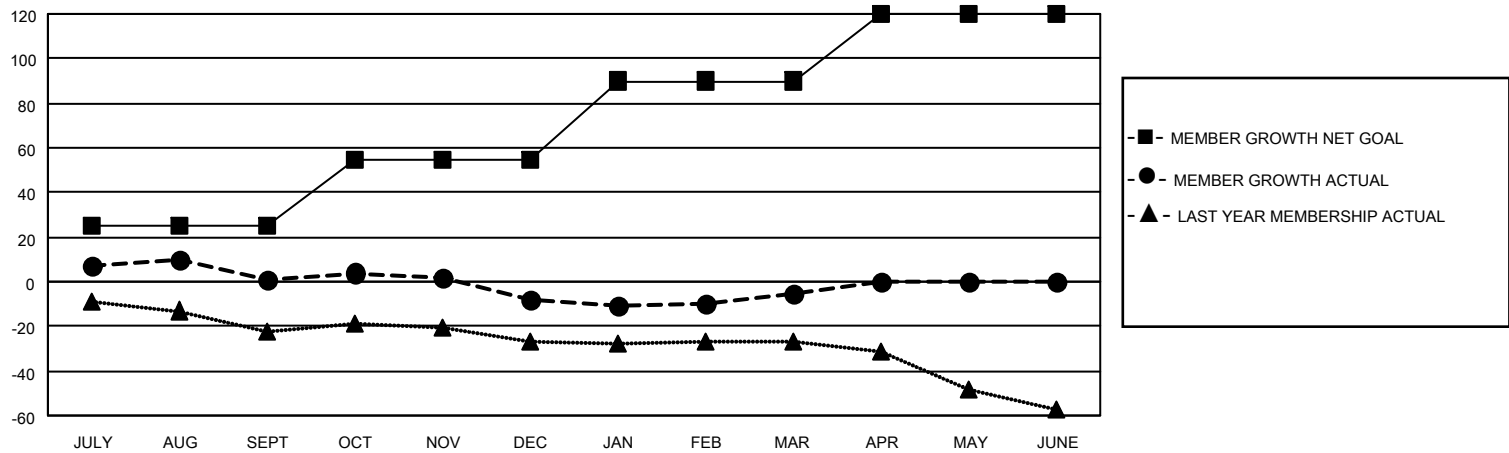
Clubs			
RESULTS FOR 2025-2026			
QUARTER	NEW CLUB GOAL	NEW CLUBS	DROPPED CLUBS
JULY/AUG/SEPT	0	0	1
OCT/NOV/DEC	0	0	1
JAN/FEB/MAR	0	0	0
APR/MAY/JUNE	1	0	0

Members			
RESULTS FOR 2025-2026			
QUARTER	MEMBER GROWTH NET GOAL	MEMBER GROWTH ACTUAL	DROPPED MEMBERS ACTUAL (including transfers)
JULY/AUG/SEPT	25	23	21
OCT/NOV/DEC	30	19	23
JAN/FEB/MAR	35	19	14
APR/MAY/JUNE	30	0	0

GOALS AND ACTUAL NEW CLUBS CUMULATIVE



GOALS AND ACTUAL MEMBERS CUMULATIVE



DROPPED CLUBS: 2	21 CLUBS OF 45 ADDED 1 OR MORE NEW MEMBERS	GENDER DISTRIBUTION MALE 515 (61.09%) FEMALE 328 (38.91%)
DROPPED MEMBERS DECEASED 6 CLUB CANCELLED 17 OTHER 35 TOTAL 58	CLICK HERE FOR CUMULATIVE MEMBERSHIP DATA	TOTAL FAMILY UNIT MEMBERS 184 FAMILY MEMBERS PAYING HALF DUES 93